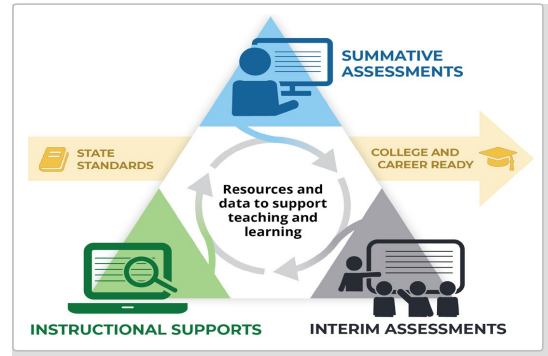




Smarter Balanced Interim Assessments

The Smarter Balanced Assessment System consists of three components: end-of-year **summative assessments** designed for accountability purposes, **interim assessments** designed to support teaching and learning throughout the year, and a suite of tools and resources in the Digital Library that support classroom-based **formative assessment practices**.



This document contains an overview of the Smarter Balanced Interim Assessments that are available for administration to students throughout the 2019-2020 school year.

Interim Assessments are designed to support teaching and learning throughout the school year by providing feedback about student performance to inform instruction. Smarter Balanced offers different types of interim assessments based on the granularity of the content they assess.

Interim Comprehensive Assessments (ICAs) measure similar content to the summative assessment and may be helpful for determining the knowledge and skills of students who are new to the district or the state. ICAs can also provide information about students' knowledge and skills after a significant period of instruction.

Interim Assessment Blocks (IABs) are assessments teachers can use throughout the school year to assess smaller bundles of content. They are intended to provide educators and students the ability to check where they are at that moment in time, and educators can use results to determine next steps for instruction. Since the IABs are more granular than the ICAs, educators can use IABs during the school year more consistently with the sequence of their instruction.

Beginning in the 2019–20 school year, new focused IABs will assess no more than three assessment targets to provide educators with a more detailed understanding of student learning.

Each IAB is associated with a Connections Playlist that supports teachers in determining instructional next steps to help students based on their performance on the assessment. The playlists include links to instructional resources in the Digital Library that support the formative assessment process by providing tools, resources, and instructional strategies to use in the classroom.

Interim Assessment Items

Ways in which Interim items are the same as the Summative items:

- All items were developed using the same process/criteria as Summative items
- Assess Hawai'i Common Core Standards
- Use Universal Design principles and accessibility resources
- Provide evidence of student progress towards meeting the Hawai'i Common Core Standards in English Language Arts (ELA)/Literacy and Mathematics

Ways in which Interim items are different from Summative items:

- Separate, open, non-secure item pool
- Assessments are fixed form (all students see the same questions and will see them again if the assessment for each subject is taken multiple times).

Interim Comprehensive Assessments (ICAs)

- Provide for five opportunities per school year
- Use the same test blueprint as the Summative Assessments and assess the same claims (content areas within a subject) and standards
- There are **ELA/Literacy and Math ICAs for grades 3 through 11**, now including grades 9 and 10. These ICAs consist of two components for ELA/Literacy: a CAT, and a Performance Task (PT), both of which must be completed. For Mathematics, there is no PT component.
- Yield overall scale scores, performance level designation and claim score information if all the components are completed and scored.

Interim Assessment Blocks (IABs)

- Provides for five opportunities per school year
- Assess smaller sets of targets which are narrowly defined skills within a claim. IABs assess 3 to 6 targets while **Focused IABs measure 1 to 2 targets**.
- Results are reported as "Below Standard, "At/Near Standard," and "Above Standard"

Interim Assessment Security

The interim assessments are considered student- and teacher-facing only. This designation provides educators the flexibility to access the test questions in the Assessment Viewing Application, answer keys in TIDE, and their students' responses to the test questions in AIRWays Reporting. However, interim assessments must not be publicly displayed or distributed outside the classroom to ensure all educators can use the interim assessments as intended.

The following are lists of the ELA/Literacy and Mathematics IABs and Focused IABs currently available for the 2019-2020 school year.

English Language Arts ELA/Literacy IABs

Grades 3 - 7	Grade 8	High School
Read Literary Texts	Read Literary Texts	Read Literary Texts
Read Informational Texts	Read Informational Texts	Read Informational Texts
Brief Writes	Brief Writes	Brief Writes
Research	Research	Research
Performance Task	Performance Task	Performance Task
Revision	Edit/Revise	Revision

English Language Arts ELA/Literacy Focused IABs

Grades 3 - 7	Grade 8	High School
Research: Interpret and Integrate Information	Research: Interpret and Integrate Information	Research: Interpret and Integrate Information
Listen/Interpret	Listen/Interpret	Listen/Interpret
Research: Analyze Information	Research: Analyze Information	Research: Analyze Information
Write and Revise Narratives	Write and Revise Narratives	Write and Revise Narratives
Language and Vocabulary Use (Writing)		Language and Vocabulary Use (Writing)
Editing		Editing

Mathematics IABs

Grade 3	Grade 4	Grade 5
Operations and Algebraic Thinking	Operations and Algebraic Thinking	Operations and Algebraic Thinking
Measurement and Data	Measurement and Data	Measurement and Data
Performance Task ¹	Performance Task ¹	Performance Task ¹
	Numbers and Operations - Fractions	Numbers and Operations - Fractions
	Number and Operations in Base Ten	Number and Operations in Base Ten
Grade 6	Grade 7	Grade 8
Expressions and Equations	Expressions and Equations	Expressions and Equations
Performance Task ¹	Performance Task ¹	Performance Task ¹
The Number System	Geometry	Geometry
High School		
Algebra and Functions I - Linear Functions, Equations and Inequalities		
Algebra and Functions II - Quadratic Functions, Equations, and Inequalities		
Geometry Congruence		
Geometry Measurement and Modeling		
Performance Task ¹		

¹Require hand scoring

Mathematics Focused IABs

Grade 3		Grade 4		Grade 5	
Geometry		Geometry		Geometry	
Multiplication and Division: Interpret, Represent, and Solve		Four Operations: Interpret, Represent and Solve		Numerical Expressions	
Properties of Multiplication and Division		Fraction Equivalence and Ordering		Operations with Whole Numbers and Decimals	
Multiply and Divide within 100		Fractions and Decimal Notation		Add and Subtract with Equivalent Fractions	
Number and Operations in Base Ten					
Number and Operations - Fractions					
Grade 6		Grade 7		Grade 8	
Ratios and Proportional Relationships		Ratios and Proportional Relationships		Proportional Relationships, Lines, and Linear Equations	
Statistics and Probability		Statistics and Probability		Functions	
Divide Fractions by Fractions		The Number System		The Number System	
One-Variable Expressions and Equations		Equivalent Expressions		Expressions & Equations II	
Dependent and Independent Variables		Algebraic Expressions and Equations		Analyze and Solve Linear Equations	
Geometry		Geometric Figures		Congruence and Similarity	
High School					
Number and Quantity		Equations and Reasoning		Interpreting Functions	
Statistics and Probability					
Seeing Structure in Expressions/Polynomial Expressions		Solve Equations and Inequalities: Linear and Exponential		Solve Equations and Inequalities: Quadratic	
				Geometry and Right Triangle Trigonometry	

Administration of Interim Assessments

The Interim Assessments:

- are administered online through the Test Delivery System (TDS).
- include individual Universal Tools, Designated Supports, and/or Accommodations, which may be selected in [TIDE](#) based on the needs of individual students.
- use the same [Secure Browser](#) as Summative Assessments and other statewide assessments.
- use the same directions for administration as the Summative Assessments. These directions may be found in the [Interim Assessments Test Administration Guide](#) posted on the Smarter Balanced Resources page of the Hawai'i Statewide Assessment Program (HSAP) portal (alohahsap.org).

Scoring of tests

- **The scoring of open response items will now be carried out in the AIRWays Reporting System.** The revised [AIRWays Reporting System User Guide](#) will be available in early September 2019.
- ELA ICAs and some IABs have machine-scored student responses. These are available in the AIRWays Reporting System for review, verification and optional hand scoring as deemed appropriate. **Hand scoring will no longer be required for ICAs** to generate an overall ICA score. However, **hand scoring is required for the Mathematics Performance Task IABs.** Performance data for the Mathematics Performance Task IABs will not be available until the hand scoring is completed.
 - For more information about optional hand scoring, refer to the [AIRWays Reporting System User Guide](#).

Grade flexibility

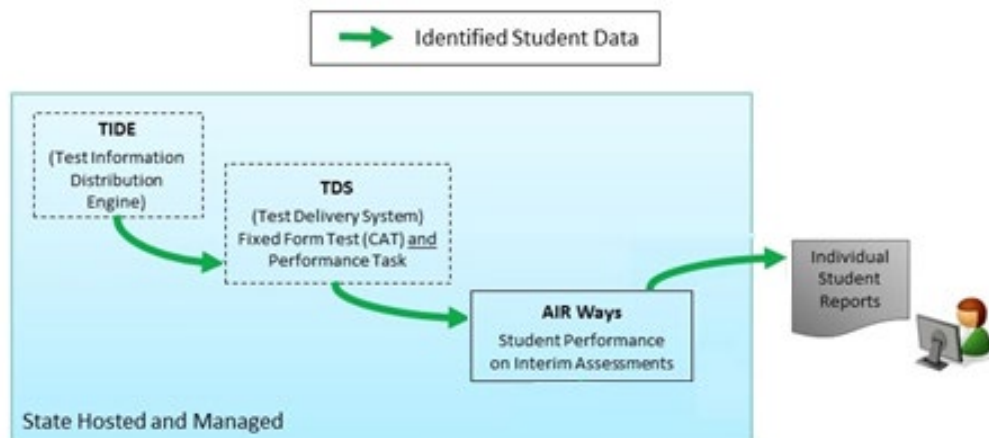
- Grade flexibility testing on the Interim Assessments provides teachers with the option of testing students outside their current enrolled grade level, when appropriate and set in TIDE. Assessments from any grade may be used, depending on the purpose. All high school students are pre-set in TIDE as eligible to take the 11th grade Interim Assessments.

Both ICAs and IABs may be administered up to five times during the school year

- School level personnel or teachers may decide which Interim Assessments to administer and how often.

Flow of Scored Test Data

- The [AIR Ways Reporting System](#) will be used to post individual student reports for Interim assessments. ICA scores will be posted for ELA/Literacy only after both the Computer Adaptive Test (CAT) and Performance Task (PT) have been completed by a student. In Mathematics, scores will be posted after the CAT has been completed by a student as there is no PT component.



Additional Information:

- For information about reporting, optional editing of scores/hand-scoring, and detailed Interim Assessment results, see the *AIRWays Reporting System User Guide*
- The above [resources](#) as well as test administration manuals and user guides for other systems are available on the Hawai'i Statewide Assessment Program portal (alohahsap.org).