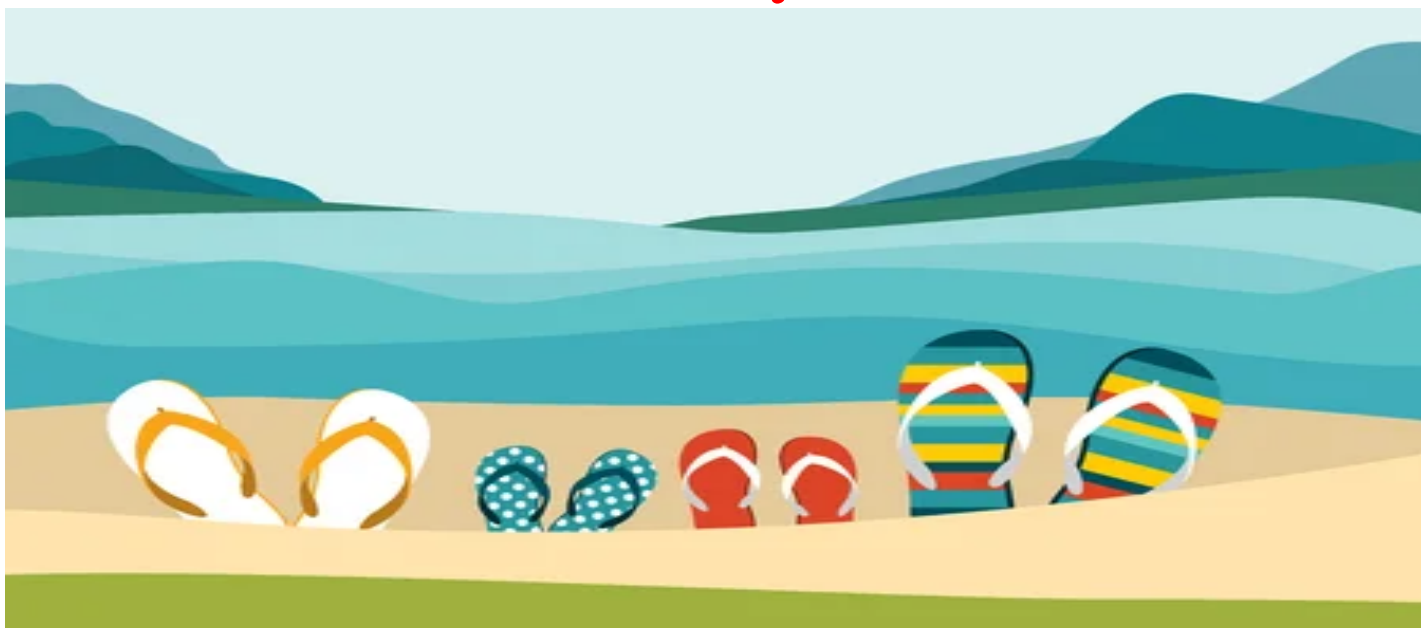


Have a Fun and Relaxing Summer Break!



Assessment News

Monday, May 23, 2022

Top News This Week

General Information

1. "Mahalo Nui Loa" to Test Coordinators and Test Administrators

The Assessment Section staff would like to extend our appreciation to all school level staff who had a role in the coordination and administration of the 2021-22 statewide assessments despite the difficulties from the pandemic. By following your school's Covid protocols, you were able to provide your students and teachers with a safe and secure test environment. Your timely administration of the statewide assessments has helped the Department to support student learning and teaching in Hawai'i as well as to comply with federal requirements for student testing. A big MAHALO to you all!

2. Memo for SY 2022-2023 Assessment Schedule

The [Hawaii State Assessment Program, School Year 2022-23](#) memo with the schedule of test windows for all statewide assessments has been posted in the alohahsap.org portal so you will be able to review and begin planning your school testing schedules for next school year. This memo has been posted in English and Hawaiian. Please note that some opening and/or closing dates are subject to change. If you have any questions or concerns about the SY 2022-23 HSAP, please contact the Assessment Section at 808-307-3636 or via email at hsa@k12.hi.us.

3. Hawaii Statewide Assessment Program Test Administration Survey

School level staff members involved in the administration of the SY 2021-22 statewide assessments are encouraged to complete the [Hawaii Statewide Assessment Program Test Administration Survey](#). Feedback from this survey will be reviewed by Assessment Section staff and used to make adjustments to test coordination training sessions and resources, as well as test administration policies and procedures. Thank you for your support!

Smarter Balanced, Science, Biology EOC and HSA-Alt

4. Reasons for Non-Participation and Discrepant Records System

There are circumstances in which a student did not participate in a required statewide assessment (e.g., student refusal, medical). These circumstances are required to be documented in the Test Information Distribution Engine (TIDE) by selecting the "Data Management" drop-down and selecting "Reasons for Non-Participation." The "Discrepancy Resolution System" (DRS) feature in the "Data Management" dropdown helps users identify students who are non-participants at their schools. Users should use this feature to enter the applicable "Reasons for Non-Participation (non-participation code)" for each student and test. Once every student on this list generated in the DRS has a non-participation code, there should be no names left to view. To access the DRS, select the "Data Management" drop-down, then click "Discrepancy Resolution." For detailed information on how to use the DRS, refer to the [Office Hours webex for Managing Reasons for Non-Participation and Discrepancy Resolution](#) along with the [TIDE User Guide](#) (pages 92 - 97) or see Office Hours information regarding how to mark Non-Participation/Discrepant records.

The Discrepant Records System may be running slow at times, and may not load all students who have not tested. Please be patient as many schools are simultaneously using the system, which is taxing the system or network. Test coordinators encountering delays or lags may want to try using the system at non-peak hours such as early morning, lunch times, or in the afternoon (e.g., not during testing or attendance taking).

WIDA

5. 2022-23 WIDA AMS Enhancements

The updated [Get familiar with 2022-23 WIDA AMS enhancements](#) article is available. Information includes changes to: the WIDA AMS landing page, test practice and sample items with accommodations, customer service tools, and the test monitoring application.

Checkpoint

6. Reminder: Educator-Created Checkpoint System Tests for SY 2021-2022

Any test created prior to July 22, 2022 will be available in the Checkpoint System for educators to administer in the 2022-2023 school year. However, in order for these tests to automatically

appear in the TA Live Site, educators will need to reset the test administration windows in the Checkpoint System so they are available for student testing. Here are the steps to do so:

1. Log into the [Checkpoint](#) system.
2. Click the 'View Tests I Created' button under the 'Tests' section of the Dashboard.
3. Select the checkmark beside the test(s) published prior to July 22, 2022 that you would like to administer. You should see the 'Administer' icon appear in the Toolbar.
4. Click the 'Administer' icon to view the Test Administration window.
5. In the Test Administration window, set the desired start and end dates for SY 2022-2023 in the Administration Period section.
6. Click the Save button at the bottom of the screen.

Once these steps have been completed, the selected tests will be available for student testing in the TA Live Site for the 2022-2023 school year. You can repeat these steps to update the administration rules at any time.

Technology

7. Cambium Secure Browser Supported Operating Systems

Supported Operating Systems for the SY 2022-23 Cambium Secure Browser (used for Smarter Balanced, HSA Science, and HSA-Alt assessments and the EOCs) are as follows:

- Chrome minimum version 102+
- Windows 11 (all builds/sub-versions from May 2022 onward)
- Windows 10 (all builds/sub-versions from May 2022 onward)
- MacOS 12 (all builds/sub-versions from May 2022 onward)
- MacOS 11.4 (all builds/sub-versions from May 2022 onward)
- MacOS 10.15 (all builds/sub-versions from May 2022 onward)
- iPadOS 15 (all builds/sub-versions from May 2022 onward)
- iPadOS 14 (all builds/sub-versions from May 2022 onward)

The Secure Browser must be updated on student test devices each year prior to testing. It is recommended that technology coordinators freeze auto-updates of the OS once they have updated to a supported version to prevent accidental updates to an unsupported version of the OS.

8. Updated ACCESS for ELLs Online Software

The updated INSIGHT Secure Browser and the Central Office Services (COS) device software for the ACCESS for ELLs Online assessment will be available from DRC on *June 30, 2022*.

The Secure Browser must be updated on student test devices each year prior to testing. It is recommended that technology coordinators freeze auto-updates of the OS once they have updated to a supported version to prevent accidental updates to an unsupported version of the OS.

The minimum supported OS requirements document will be available in late June, 2022.

Disseminating Individual Student Reports (ISRs)

9. Family Portal

Test coordinators should have received an email from the Assessment Section inquiring about the capacity of schools to deliver secure communications, in this case student score reports for the Smarter Balanced, HSA Science, HSA-Alt assessments and EOCs. The test vendor has discontinued printing and shipping of score reports. Your answers to the survey linked in the email will be greatly appreciated as they will help us assess the feasibility of having a parent portal through which families can access and download copies of their student's score reports.

Assessment Section, Hawai'i State Department of Education, (808) 307-3636

HawaiiPublicSchools.org | [Facebook](#) | [Twitter](#) | [Vimeo](#)

HSAP Help Desk: Phone: 1-866-648-3712 Email: HSAPHelpDesk@cambiumassessment.com